

PO Box 19
Churchill
3842



Friends of Morwell National Park Inc.

Newsletter – January 2022

Website: <http://morwellnp.pangaeon.net>
Official Address of FMNP - contactfmnp@gmail.com
A0016319X

Hello everyone and welcome to the first newsletter for 2022.

December Activity Report

For the last activity of 2021 we started with some seed collection which was followed by the Christmas barbeque. For the morning activity of seed collection we had Rose, Jay, Joelle, Beryl, Wendy, Tamara, Matt, Ken, Peter and Darren. Gordon visited for the pre-activity meeting. We had apologies from Ranger Gabrielle, Mike, Cathy, Anj and Graeme.

The morning started with a staggered start. In preparing for this activity a seed collection permit was required. Leading up the activity the permit process was worked through and fortunately the permit came through a few days before the activity.

It was great to have the permit but this led to a rush to get the seed collection activity organised. Matt had suggested a 9am start to allow some extra organisation time. Most of the group drifted in between 9 and 10am.

Lists of species to collect along with their best collection sites had been compiled by Ken. As expected many species were



yet to be in seed since the wet spring had delayed seed development. The weather forecast for the day was for rain, so this was also a factor in the planning. A targeted approach to seed collection was devised. Jay briefed the group on how collection should occur and referred to a list of instructions she was unable to print.

The group split up to investigate the seed viability in different parts of the park. The missing bridges across Billy's Creek was also a factor which made it difficult to get to the sections of the park beyond the Weir and

Friends of Morwell National Park Inc: PO Box 19, Churchill, 3842, <http://morwellnp.pangaeon.net>.

Official Address of FMNP - contactfmnp@gmail.com

President: Gordon Duncan

Vice-President: Cathy Beamish

Secretary & Public Officer: Beryl Nelson

Treasurer: Mike Beamish

Publicity: Tamara Leitch

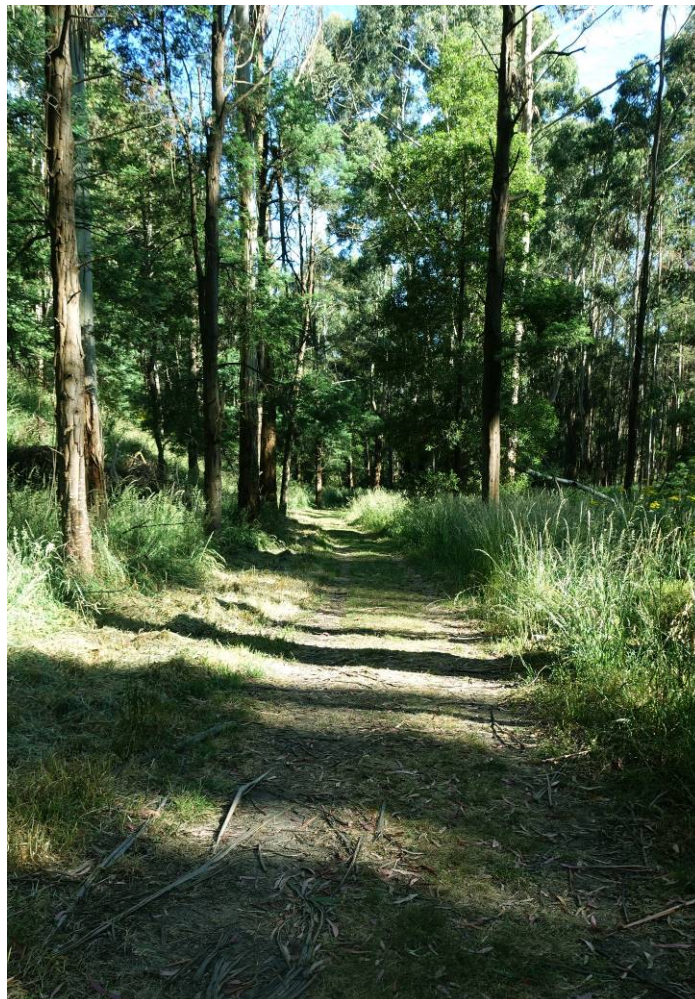
Newsletter Editor: Darren Hodgson, darren.hodgson@education.vic.gov.au

Other members: Eulalie Brewster, Graeme Busch, Matt & Kerry Campbell, Joelle Champert, Wendy Davies, Jay Duncan, Ken Harris, Hayley Mildenhall, Rose Mildenhall, Anjali Pal, Grant Pengelly, Wayne Pengelly, Chris Sikkema, Joan Sikkema, David Stickney & Wendy Steenbergen.

around Blue Gum Hill. Matt and Tamara investigated the West Boundary, while Joelle and Ken; and Rose, Jay and Wendy in separate groups went to the Billy's Creek area. Beryl, Peter and Darren collected from the beginning of the Foster's Gully Track. A brief storm blew in just after we started so everybody needed to find a dry place to wait out the storm. This was enough to wet all of the fluffy seeds.

There was little seed to collect, so follow up collections will be required. Hopefully we will be able to collect more seed during summer. A big thanks you goes to Wendy who is going store and collate the collected seed. Thanks to her for taking on this difficult job.

With good spring rains, grasses and weed species are growing strongly. The park was slashed earlier in spring and over the last week the tracks and park boundaries have been slashed again. Spraying for blackberries, thistles, Paterson's curse, tutsan and other evasive weed species needs to occur. Creek levels are still healthy and are now closer to summer levels.





With the rain earlier in the day and more to come, the lunchtime barbeque was wisely moved to Matt and Kerry's house. When the groups finished they moved towards the BBQ. Thanks to Matt and Tamara who collected the lunch treats, Matt who cooked and Matt and Kerry who hosted everybody from the earlier activity. Faye was also able to join us for lunch. Thankfully when the rains returned we were all safely under cover. Beryl's Lemon Cheesecake was again well loved by all.

January Activity

Sunday 16th January 10.00am

The group will meet in the Junction Road car park to complete the annual survey of the nesting boxes and collect some seed for planting later in the year. You will need to bring your lunch along with clothing and footwear suitable for the weather conditions on the day.

If you are to be involved in seed collection, Jay has put the following equipment list together for seed collection: secateurs, loppers, old pillow cases, flexible tubs, plastic bags, paper bags, clothesline, clothes pegs, clipboards, 4B pencils and blank plant labels – rounded.