

PO Box 19
Churchill
3842



Friends of Morwell National Park Inc.

Newsletter – January 2020

Website: <http://morwellnp.pangaeon.net>
Official Address of FMNP - contactfmnp@gmail.com
A0016319X

Hello everyone and welcome to the first newsletter for 2020. Spring and the beginning of summer continues to be wet, the Park is very green for this time of year.

December Activity Report

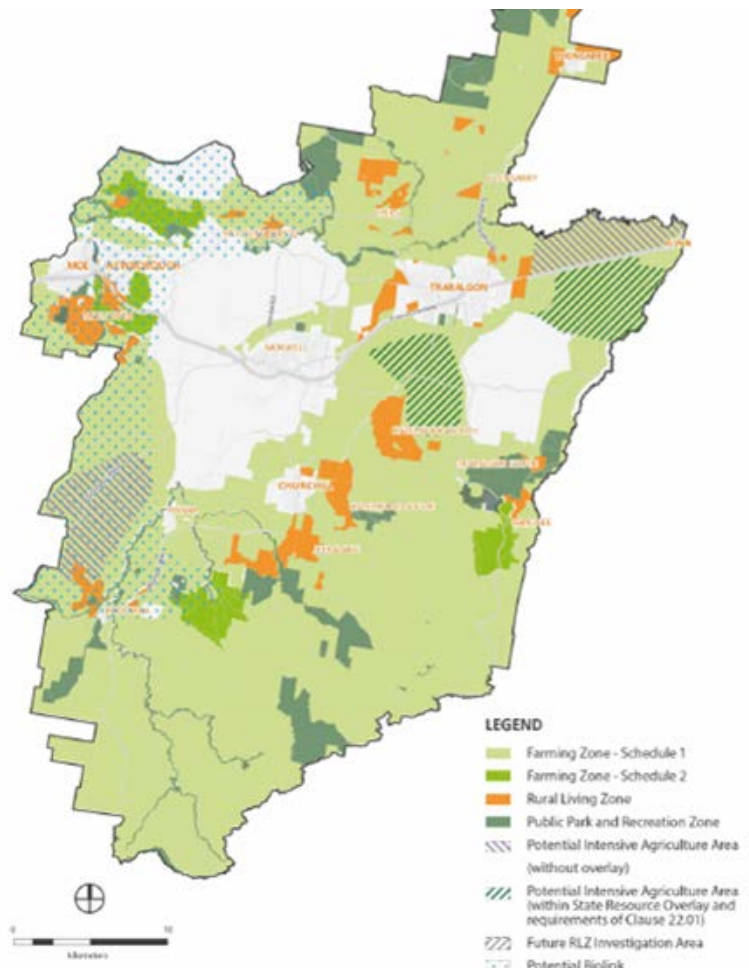
At this month's activity we had Beryl, Mike, Cathy, Graeme, Matt, Tamara, Rose, Hayley, Jay, Joelle and Darren. We had Maria and Miguel come for their first activity. They had located us via Parks Connect. We had apologies from Ken, Grant and Wayne.

We met in the carpark and Matt updated us upon the news from the last month. He has recently met our new ranger Gabrielle Browne and will show her around some of the more remote parts of the Park soon. The grass in the car park area has been cut and hopefully Parks will be able to slash the tracks and boundaries soon, since some tracks are lost in the long grass.

The work on the Gippsland Biolink continues with meetings between the major stake holders occurring. The Biolink aims to provide a wildlife and wilderness corridor between the Alps and the Strzelecki Ranges. The Biolink runs across a range of both private and public lands. The Biolink aims help reverse the impacts of landscape degradation, habitat loss and fragmentation by restoring and relinking strategic parcels of land. From pioneering large-scale restoration offsets for habitat gain, to working on 2,000ha with over 500 landholders and 25 schools.

The current efforts in relation to the project are mapping the corridor which will link to Morwell National Park at its western boundary.

The focus of the day's activity was to be



seed collection for future activities. Jay spoke to the group about seed collection techniques including the need to collect from a variety of trees and she highlighted the range of trees that could have seed at this time of the year.

The group divided up for the day's activities. Matt, Tamara, Joelle, Maria and Miguel drove to the base of Blue Gum Hill to look over the direct seeding sites from our August activity. They walked up Blue Gum Hill to find that in some sites, some of the seeds have shot and grown into small seedlings. The grass at some test sites is very thick so it was hard to determine the seedling strike rates at these sites.



The rest of groups worked on seed collection with Mike, Cathy and Darren walking down Billy's Creek Track to find very few trees with viable seed. The group collected some seed and also cleared sticks from the track. A patch of very large mushrooms was found. Jay, Rose, Hayley and Beryl searched for seeds around the car park and council reserve opposite the car park. They later looked along Billy's Creek for other seed species. There were not many seeds to collect with our wet spring resulting in the seeds not developing yet.



After the morning activities, most of the group travelled over to Kerry Road for our year ending BBQ. We tested the BBQ to find that it was not working. Shane had tested it and reported that it was working. Matt had even successfully ran it a few weeks ago. Sadly it did not work when we needed it. Another group also came wanting to use the BBQ. They needed to relocate their gathering to a Morwell park with a working BBQ. Matt needed again to bring his BBQ to cook our lunch.

Mike and Cathy had done a great job to bringing everything we needed (plus a little more) and Beryl did a great job of setting up extra tables and chairs. These were useful because recently we lost one of the park benches in the picnic area when a branch fell on it and the safety fence. The safety fence was repaired and broken table removed. For the BBQ, Ken, Faye, Wayne, Joan, Harry and Chris joined most of the group from the morning activity.

Over a range of nibbles the group caught up on any missed news from the year. Mike cooked up a selection of sausages, hamburgers, chicken and vege-burgers which people ate with a choice of salads. Later a large selection of desserts were enjoyed. There were too many yummy choices.



January Activity

Sunday 19th January 10am

The group will meet in the Junction Road car park to complete the nesting box survey. You will need to bring your lunch along with clothing and footwear suitable for the weather conditions on the day.